



Finetex EnE, Inc.
www.ftene.com

23-1, Hyoryeong-ro, Seocho-gu, Seoul 06694
+82-2-3489-3300 Fax. +82-2-523-0544

Air Exchange
Waterproof
Windproof
Water Resistant
Breathable

Keep The Best Condition


nexture[®]
NANO TEXTURE



Finetex EnE, Inc.



KEEP THE BEST CONDITION NANO MEMBRANE-INSIDE

- 01** Keeps you fresh
 - 02** Is excellent weather protect
 - 03** Is like your skin
 - 04** Is the next generation of nanotechnology
 - 05** The integration of nanotechnology
 - 06** Applications
- 

AIR PERMEABILITY

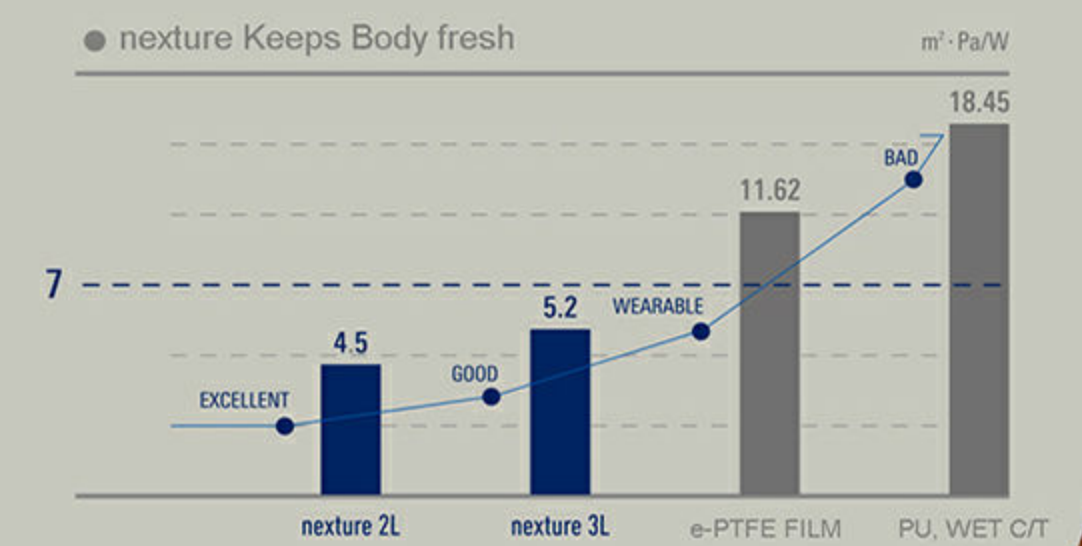
BREATHABILITY

R.E.T

Keeps you fresh **01**

R.E.T : Resistance to Evaporative Transmission

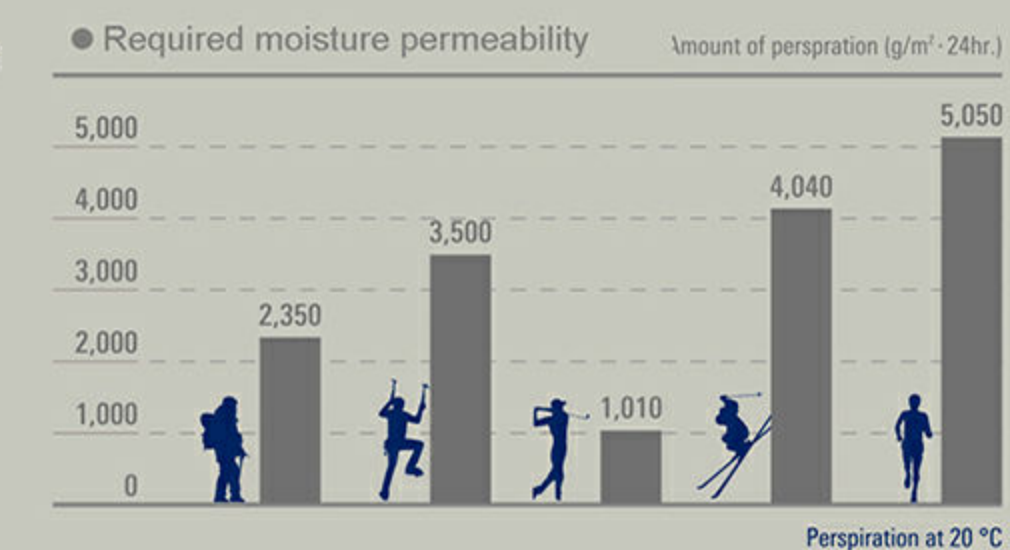
The evaporative resistance is a measure of moisture permeability which affects the latent heat transfer from the skin through the clothing layer and affects evaporative heat loss from skin surface. The comfort level can be translated with R.E.T measurement, and any number below '7' represents comfort and lower number translates to 'bigger comfort'.



nexture demonstrates excellent level of breathability and air/moisture permeability.

BREATHABILITY

The "breathable" performance of moisture vapor refers to the capability to move or transfer moisture in the form of vapor. Moisture vapor breathability of nexture helps to remove sweat and reduce body core temperature. Nano-pores of nexture work just like human skin. —thus, it gives a body an extra comfort.



AIR PERMEABILITY

nexture gives you new experience you never experienced ever before. Excellent air permeability allows your body feeling cool and fresh during workout or any outdoor activities.

<Test>

Fill the test plate with water and inject air using air pump from the bottom. This test proves air permeability level of nexture.

<Test result>

Regular membrane does not show any signs of air penetration, however nexture membrane shows air bubble penetrating through nano scale of pores.

● Air permeability test



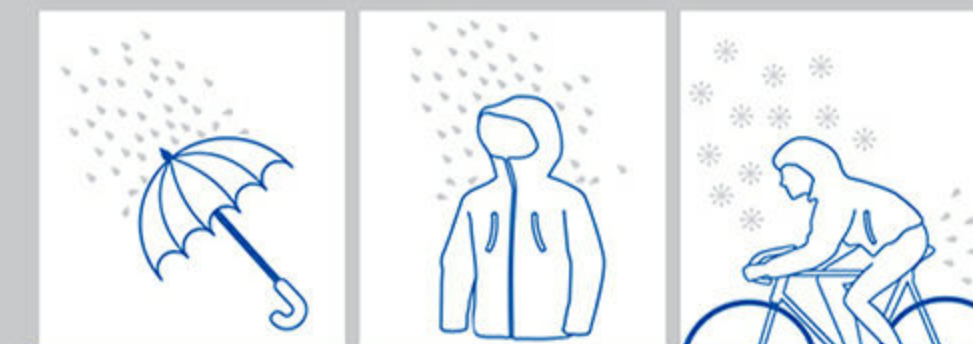
● nexture

Regular product

Is excellent weather protect

WATERPROOF

The membrane is what makes the fabric waterproof.
Nano size of membrane pores prevent rain or snow to penetrate into the fabric keeping a body dry.

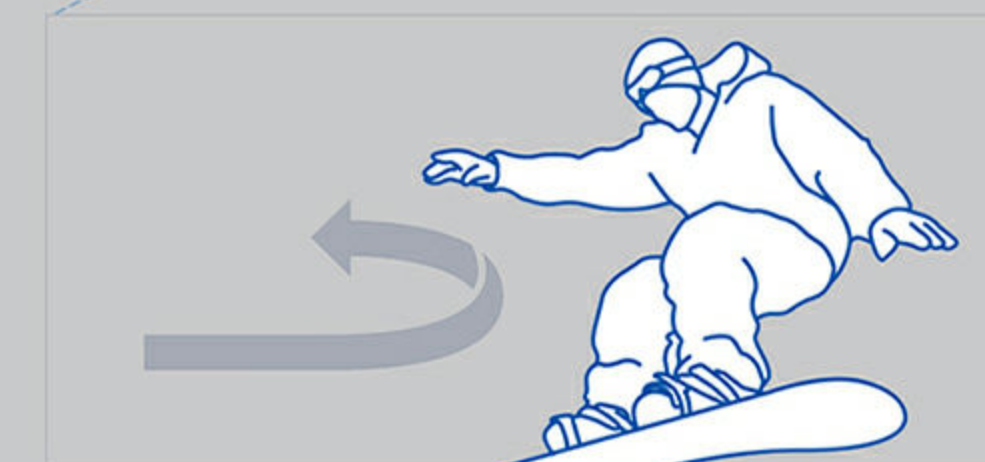


- Umbrella
200-300mmH:O
- Raincoat
300-500mmH:O
- Sitting on a cycle
1,600-2,000mmH:O



WINDPROOF

nexture blocks icy wind to penetrate inside of fabric and maintains adequate distance between body and clothing to keep favorable warm temperature and dry condition.

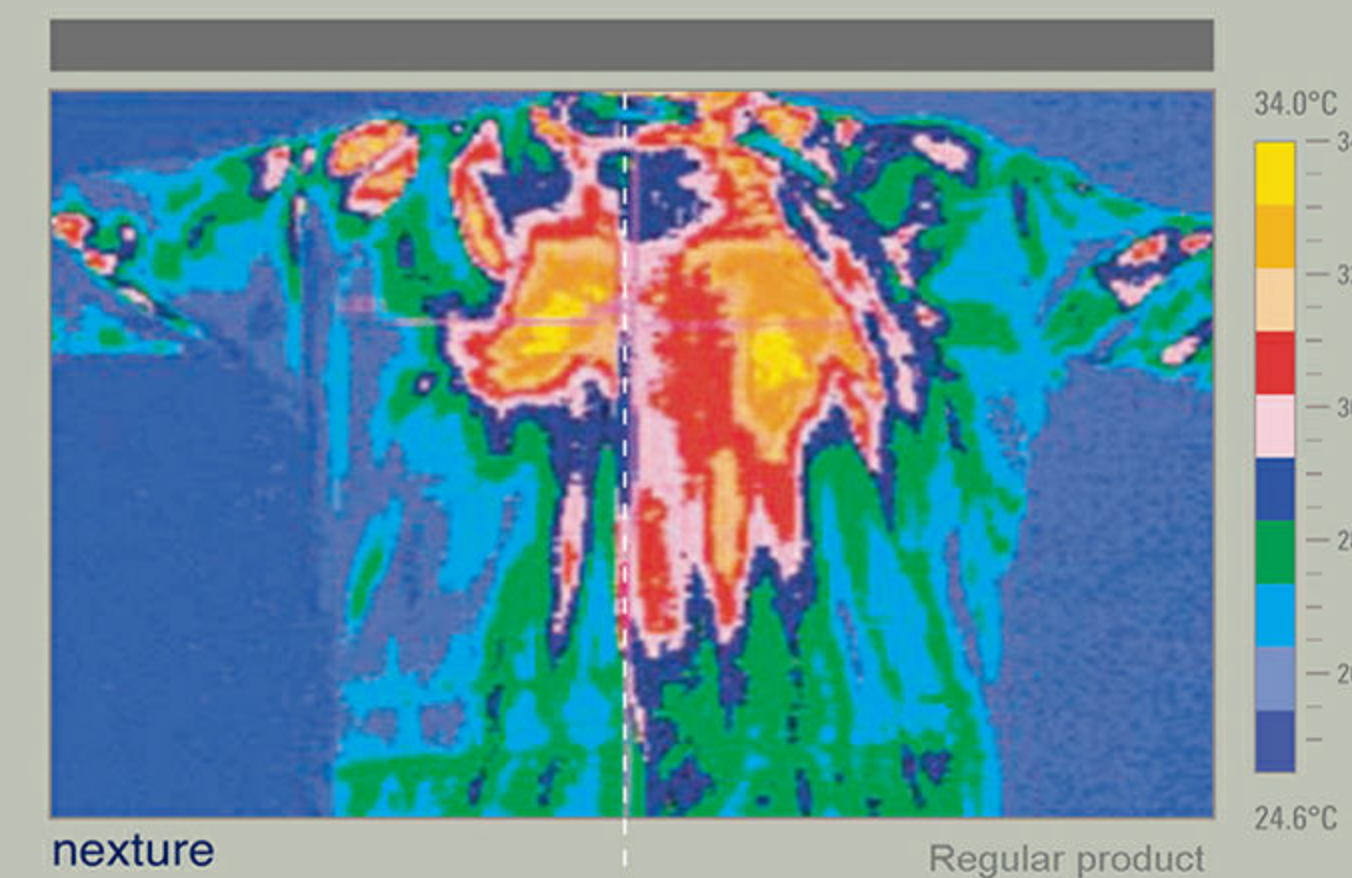


● Sensory temperature calculation
 $T - (4 \times \sqrt{v})$ (T: Temperature, V: Velocity)
 Ex) Temperature 20°C, Wind velocity of 9m/h, Sensory temperature
 $\rightarrow 20 - (4 \times \sqrt{9}) = 8^\circ\text{C}$

WATERPROOF WINDPROOF

I.R TEST

Infrared Ray Test was conducted in order to see how fast and well nexture can release heat compared to regular products. The I.R test is known as "heat" or "heat radiation" and heat is vividly shown by multiple color with yellow being the highest temperature.



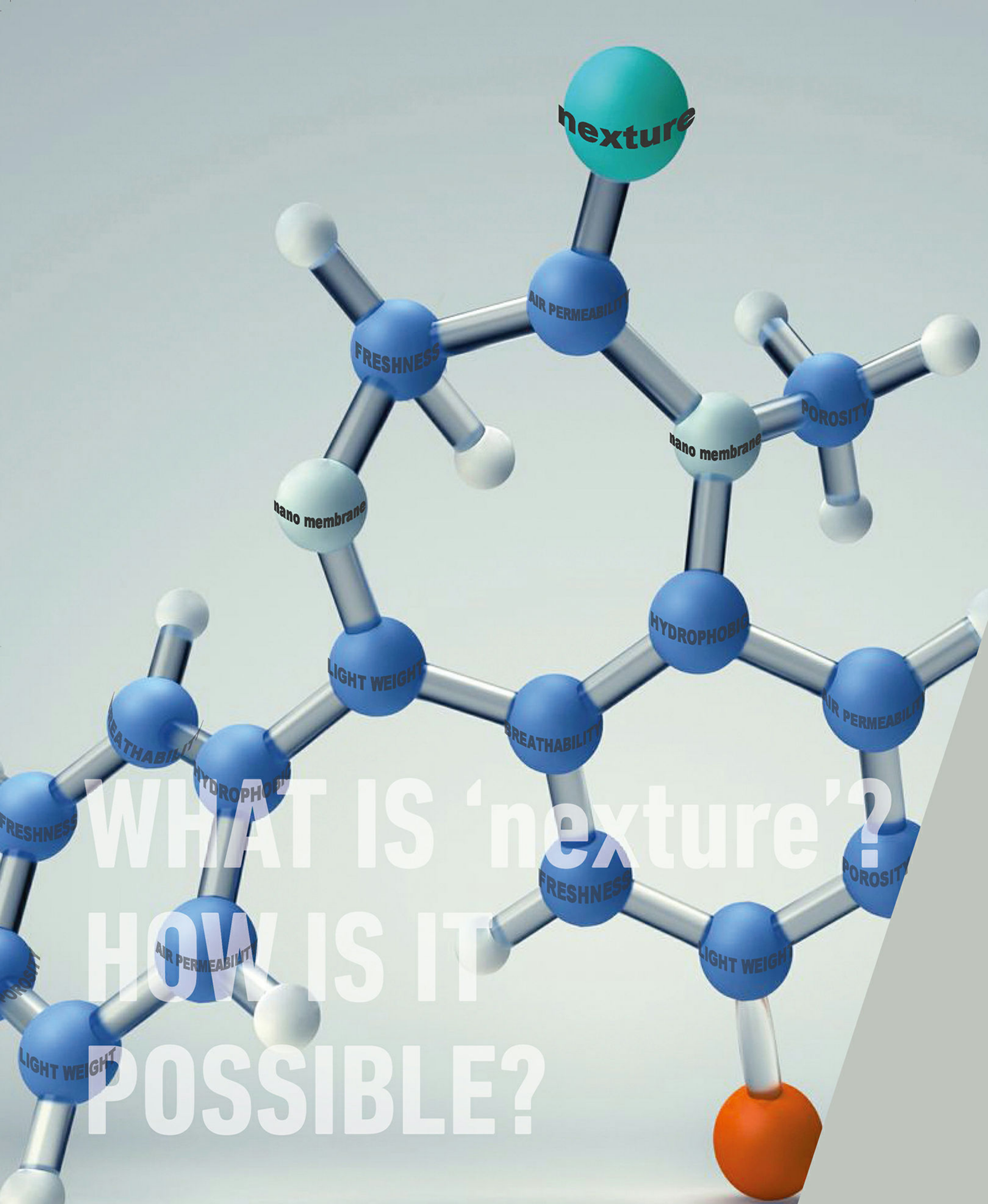
nexture

The result shows nexture has an outstanding breathability and that it helped quickly release body heat generated from workout.

Regular product

With regular product, there wasn't much reduction in body heat after workout.

I.R TEST



Is the next generation of nanotechnology

04

WHAT IS 'nexture'?

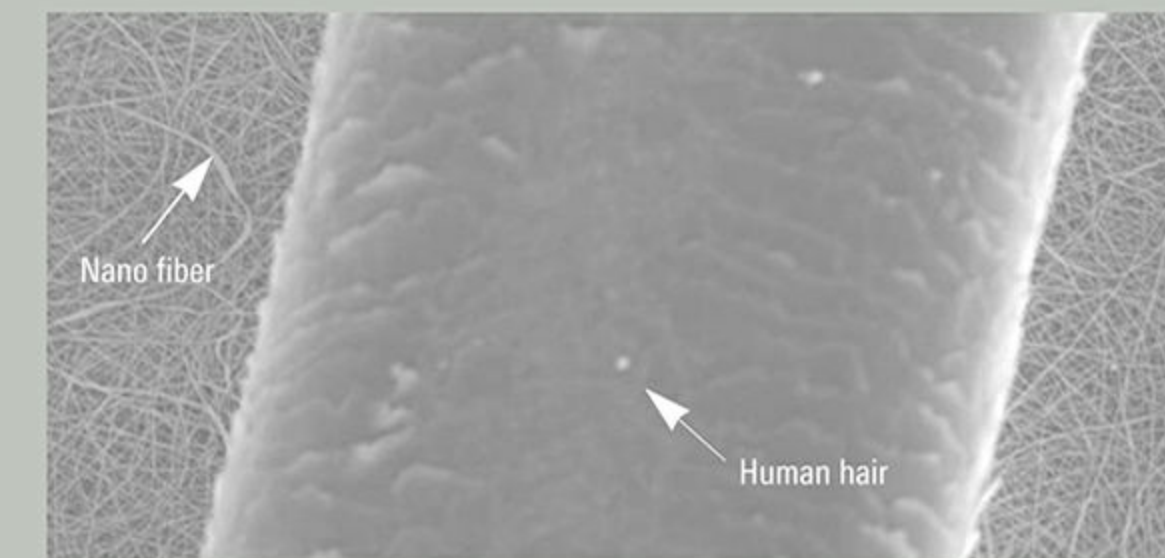
nexture is created by intergrating nanotechnologies. This is the newest and the most excellent material accelerates the function of breathability, water & windproof and durability which is excellent characteristics for any variety range of outdoor apprels.



HOW IS IT POSSIBLE?

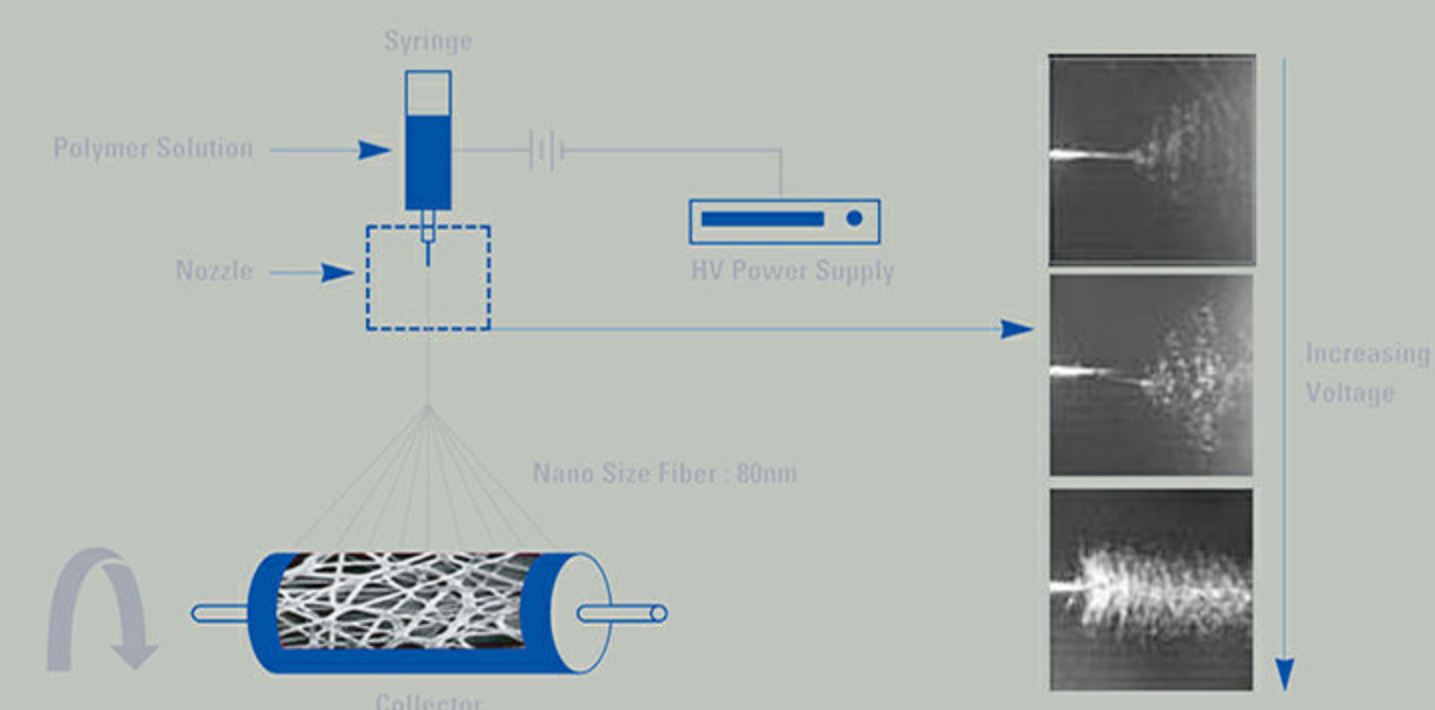
- Nano Web Membrane nexture

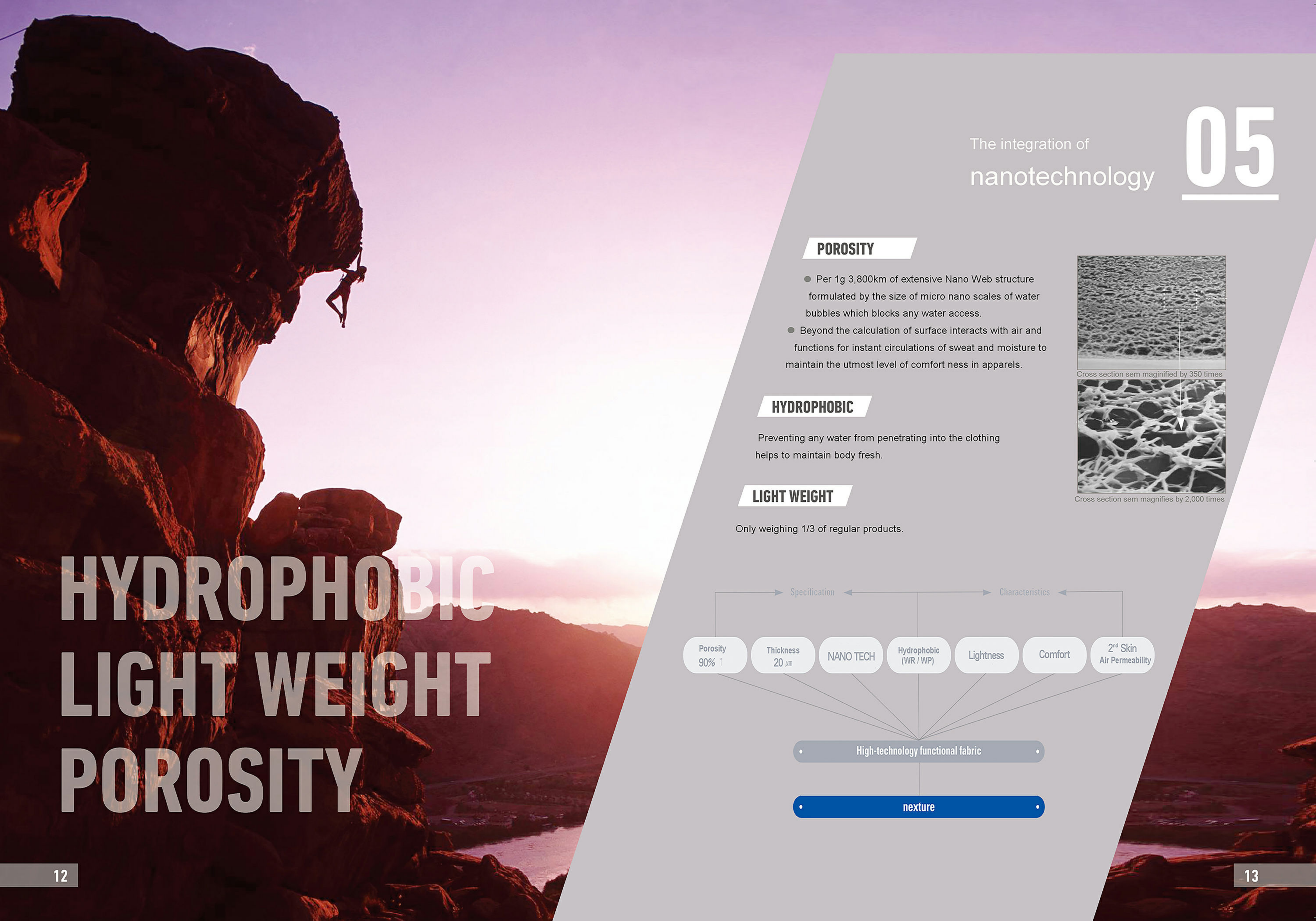
Nano scale is 1/10 billion unit. Nano fiber written as 1nm, represents the thickness of fiber in nano meter. Produced from electro spinning to formulate the nano web membrane structure. The method is very different from regular yarn spinning and that different electric charges were applied to the fabric, resulting in nexture nano web membrane.



Mano fiber & 1 Human hair

* nexture's behind theory of Nano Web Membrane





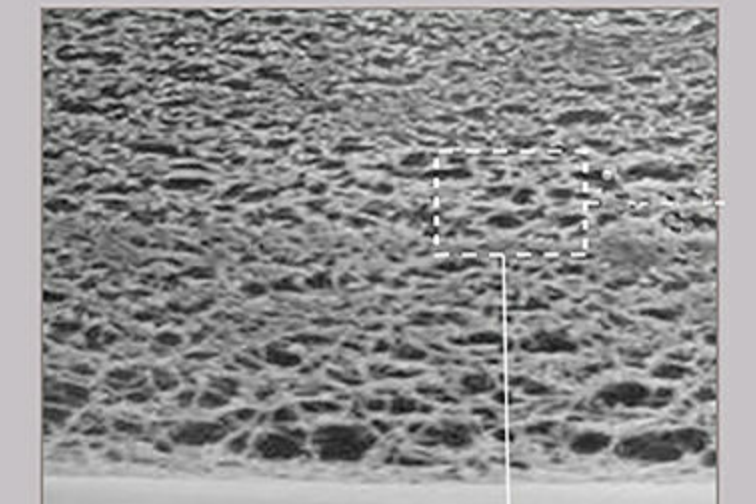
HYDROPHOBIC LIGHT WEIGHT POROSITY

The integration of
nanotechnology

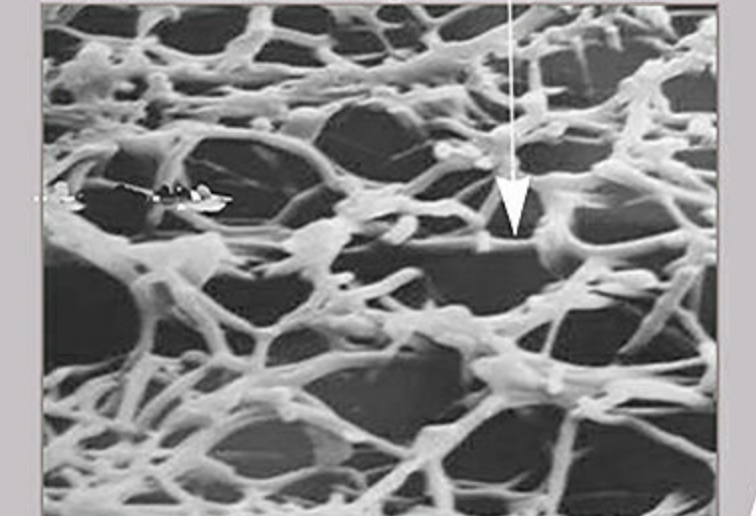
05

POROSITY

- Per 1g 3,800km of extensive Nano Web structure formulated by the size of micro nano scales of water bubbles which blocks any water access.
- Beyond the calculation of surface interacts with air and functions for instant circulations of sweat and moisture to maintain the utmost level of comfort ness in apparels.



Cross section sem magnified by 350 times



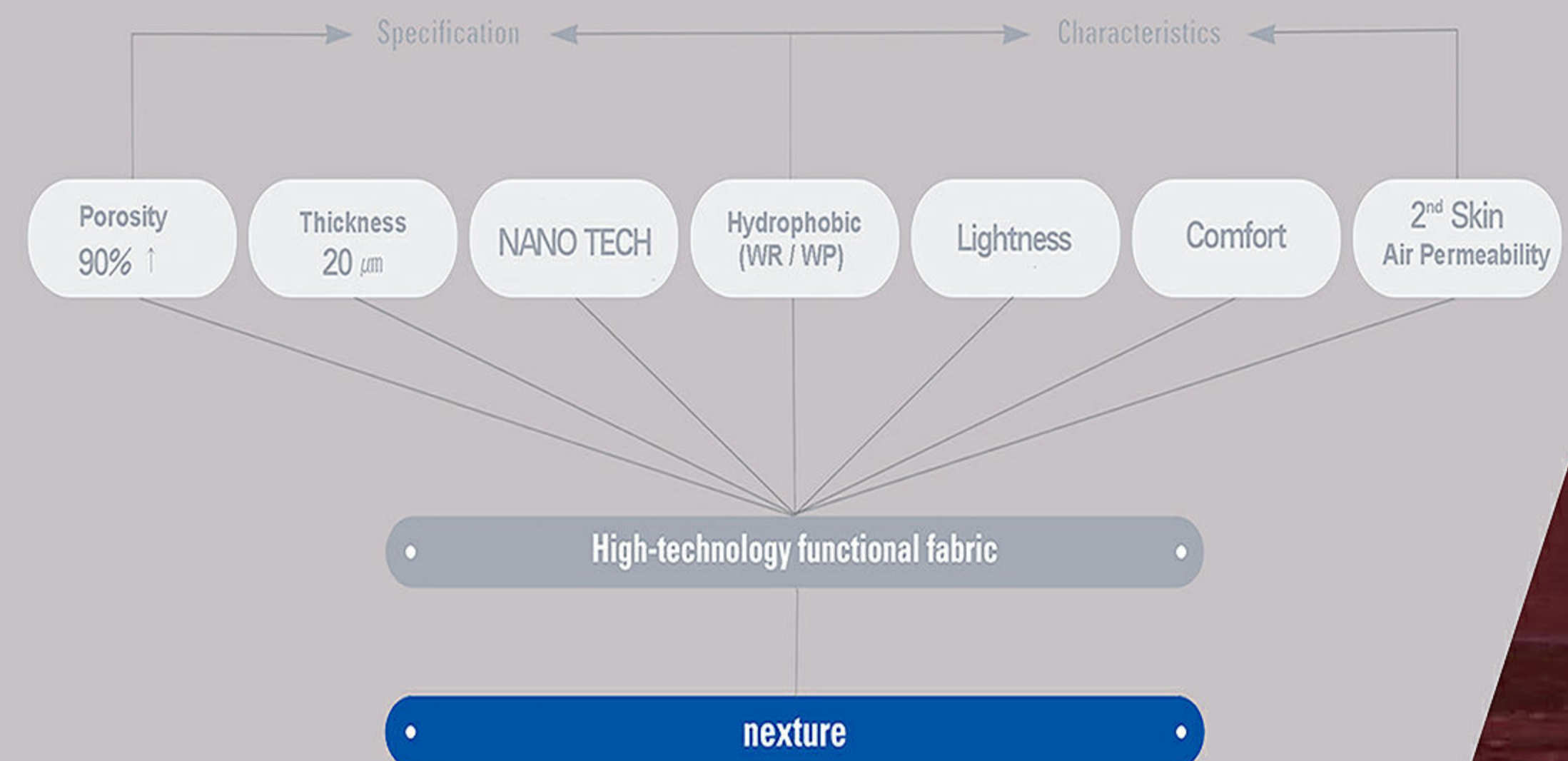
Cross section sem magnifies by 2,000 times

HYDROPHOBIC

Preventing any water from penetrating into the clothing helps to maintain body fresh.

LIGHT WEIGHT

Only weighing 1/3 of regular products.



- **TREKKING & FISHING WEAR**

From armature to professional mountain climbers (or fisherman) can enjoy light, waterproof, weather protection nexture. It is durable and keeps body warmth through out the journey.

- **SKI & BOARD WEAR**

nexture regulates skier and boarder's body temperature with its amazing breathability.

- **GOLF WEAR**

Soft, light and yet functional fabric makes it excellent for golf wear.

- **ACTIVE (RUNNING/CYCLING) WEAR**

nexture gives a new level of comfort. It pulls perspiration away from skin to keep body dryer and more comfortable. It keeps body feeling cool and dry and it is the best fabric for active wear.



TREKKING & FISHING



SKI & SNOW BOARD



GOLF



ACTIVE (RUNNING/CYCLING)

APPLICATIONS